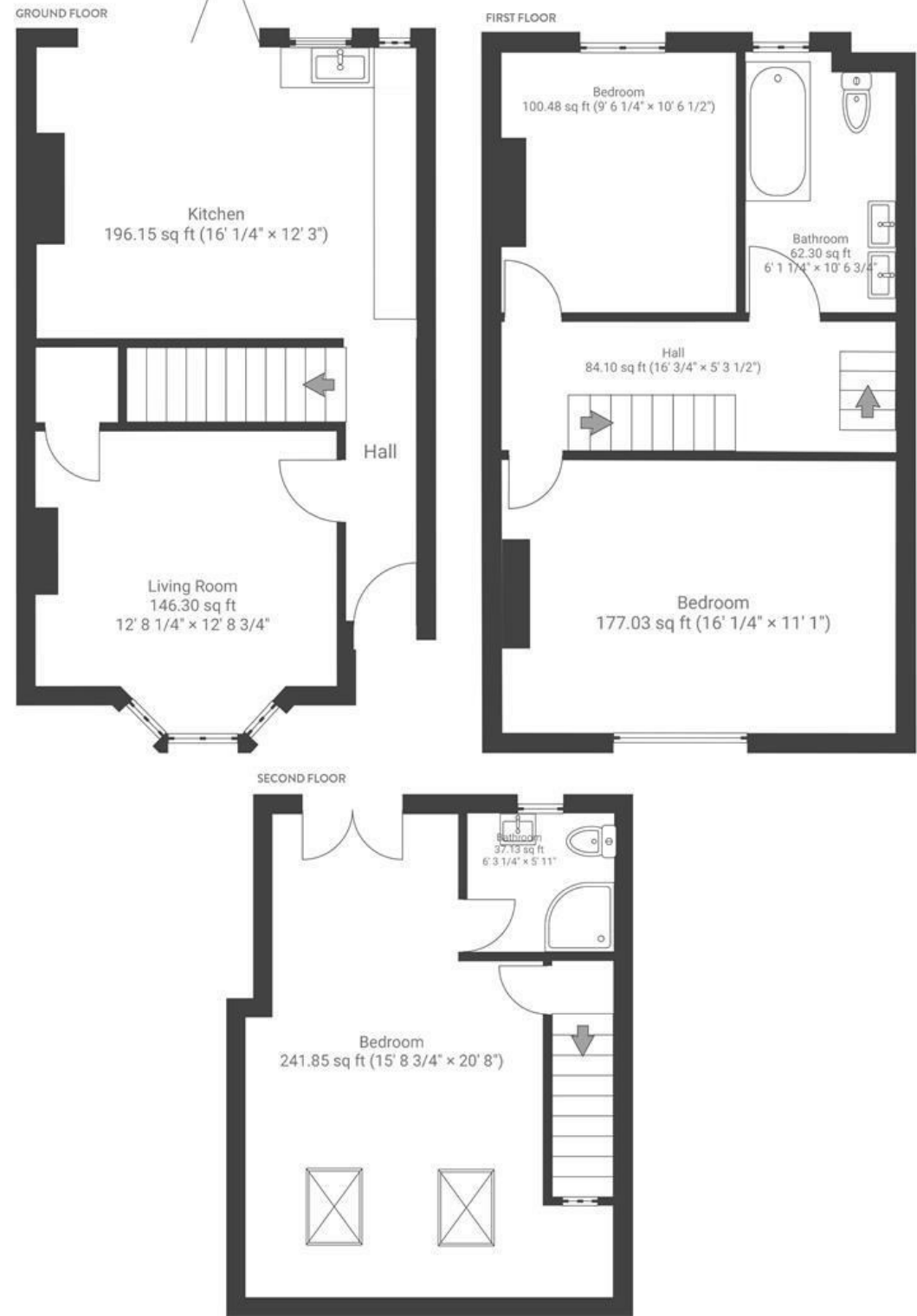


# Mina Road

## ST. WERBURGHS

APPROXIMATE FLOOR AREA  
110 SQM / 1187 SQFT



Boardwalk

# Mina Road

ST WERBURGHS, BRISTOL

£

£500,000



BS2 9XL

z z z

3 Bedrooms



2 Bathrooms

*"Sadly downsizing and leaving beloved Werburghs, there's nowhere actually like it elsewhere in Bristol. The house has beautiful Victorian features and also very spacious due to the loft conversion. When you look out of every window you see trees and greenery, it's a very private city oasis. I'll miss hearing basketball being played and popping into the park in the wee hours of the night with my big dog. I'll especially miss my big blue bedroom and being above the tree line."*

